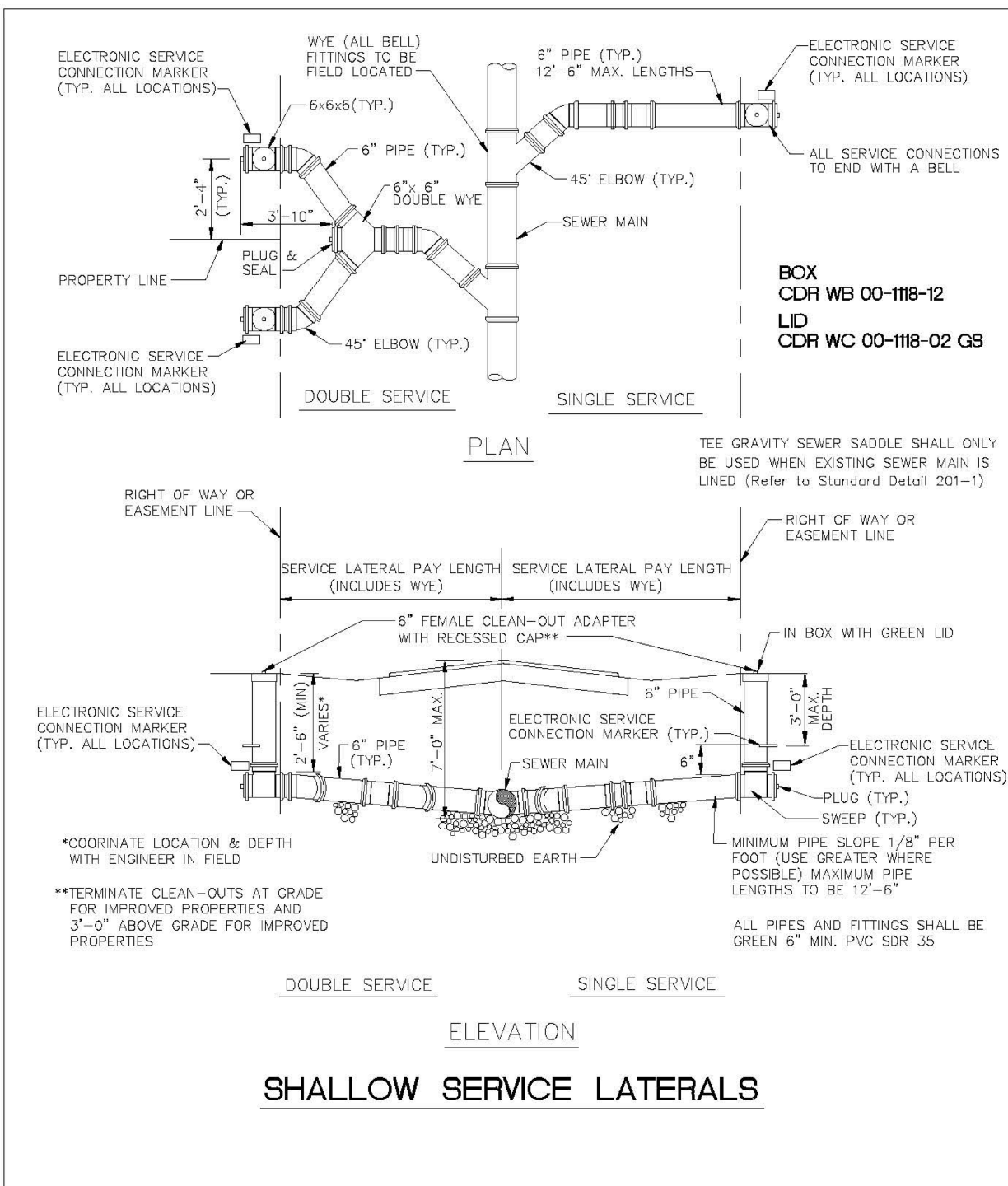
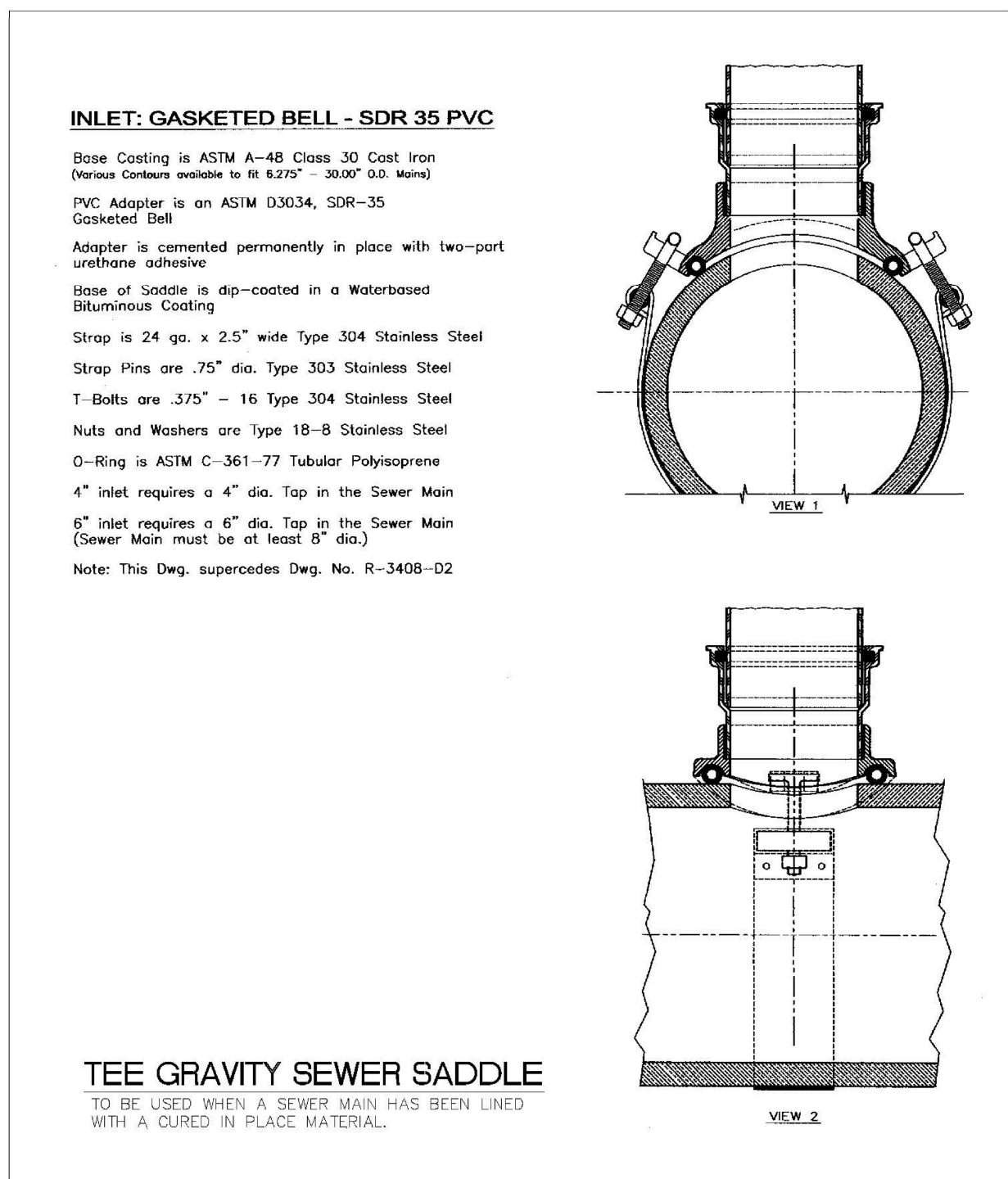


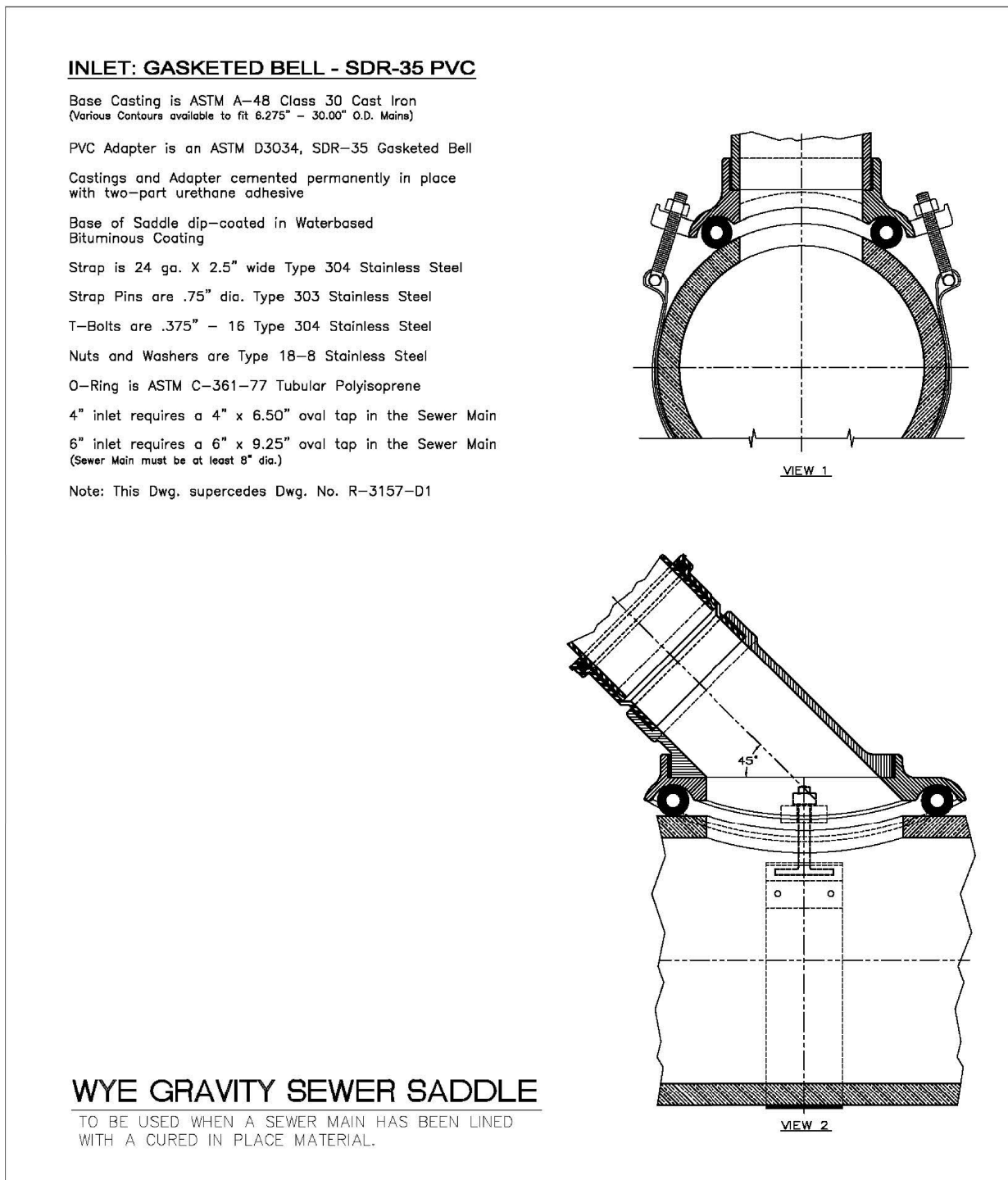
ENGINEERING STANDARDS 2022			
REVISIONS	ENGINEERING DIVISION	SERVICE LATERALS	
BY DATE	CITY OF POMPANO BEACH		
T.W. 11-2007			
S.S. 01/27/12			
S.S. 07/10/12			
S.S. 02/05/16	SCALE: N.T.S.		DATE: JUNE 2022 DWG. NO. 200-1



ENGINEERING STANDARDS 2022			
REVISIONS	ENGINEERING DIVISION	SERVICE LATERALS	
BY DATE	CITY OF POMPANO BEACH		
T.W. 11-2007			
S.S. 01/27/12			
S.S. 07/10/12			
S.S. 02/05/16	SCALE: N.T.S.		DATE: JUNE 2022 DWG. NO. 200-2



ENGINEERING STANDARDS 2022			
REVISIONS	ENGINEERING DIVISION	TEE GRAVITY SEWER SADDLE	
BY DATE	CITY OF POMPANO BEACH		
S.S. 11/23/16			
	SCALE: N.T.S.		DATE: MAY 2022 DWG. NO. 201-1



ENGINEERING STANDARDS 2022			
REVISIONS	ENGINEERING DIVISION	WYE GRAVITY SEWER SADDLE	
BY DATE	CITY OF POMPANO BEACH		
S.S. 11/23/16			
	SCALE: N.T.S.		DATE: MAY 2022 DWG. NO. 201-2

### Adjustable Repair Coupling

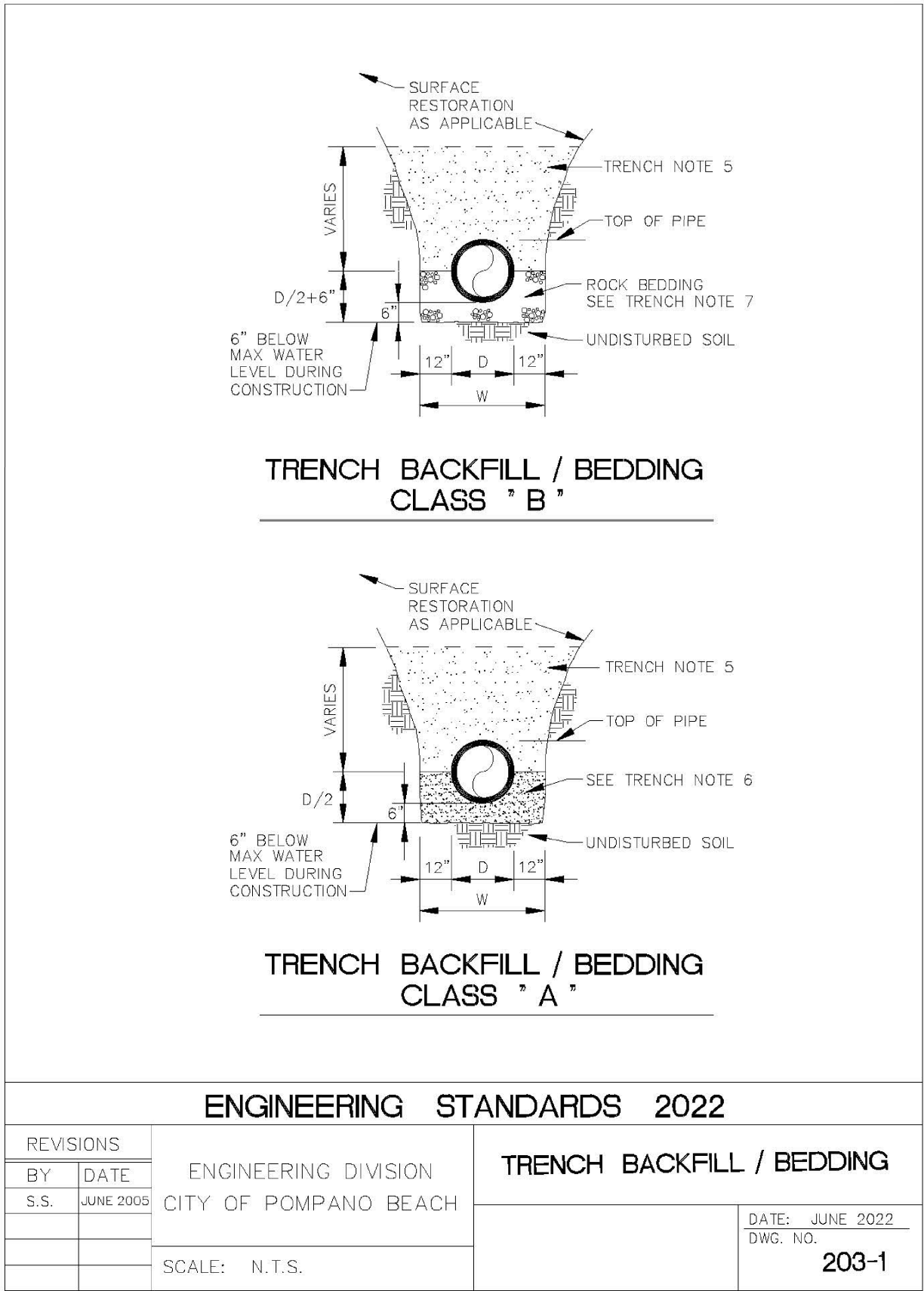
**NOTES**

- Synthetic rubber gasket is strong, durable and resilient to ultraviolet rays, ozone, fungus growth and normal sewer gases. More pliable and easier to install in cold weather applications than an Elastomeric PVC gasket.
- Sealing "O" rings under the clamp prevent pipe slippage and create a more positive seal.
- More transition couplings for dissimilar pipe types and sizes are comprised of a one-piece transition gasket, eliminating the use of bushings that are difficult to install and easy to lose on the job site.
- Surgical Grade 316 stainless steel Nut & Bolt clamps are corrosion resistant, providing outstanding protection in severe environments such as marine applications, poorly aerated or moist soils, contaminated ground conditions (particularly industrial fill sites) and where the ground water contains chloride, sulfates or bicarbonates. Increased band tension of the Nut & Bolt clamp ensures a leak-proof, root-proof seal that is resistant to both infiltration and exfiltration.
- Series 300 stainless steel shear band is the heaviest in the industry, over 33% thicker than the competition.
- Broadest range of couplings on the market in sizes ranging from 1 1/2" to 96" in diameter. Used for the alteration and rehabilitation of gravity-flow sewage pipes made of clay, cast iron, plastic, concrete, ductile iron, asbestos cement, fiber cement and truss pipe.

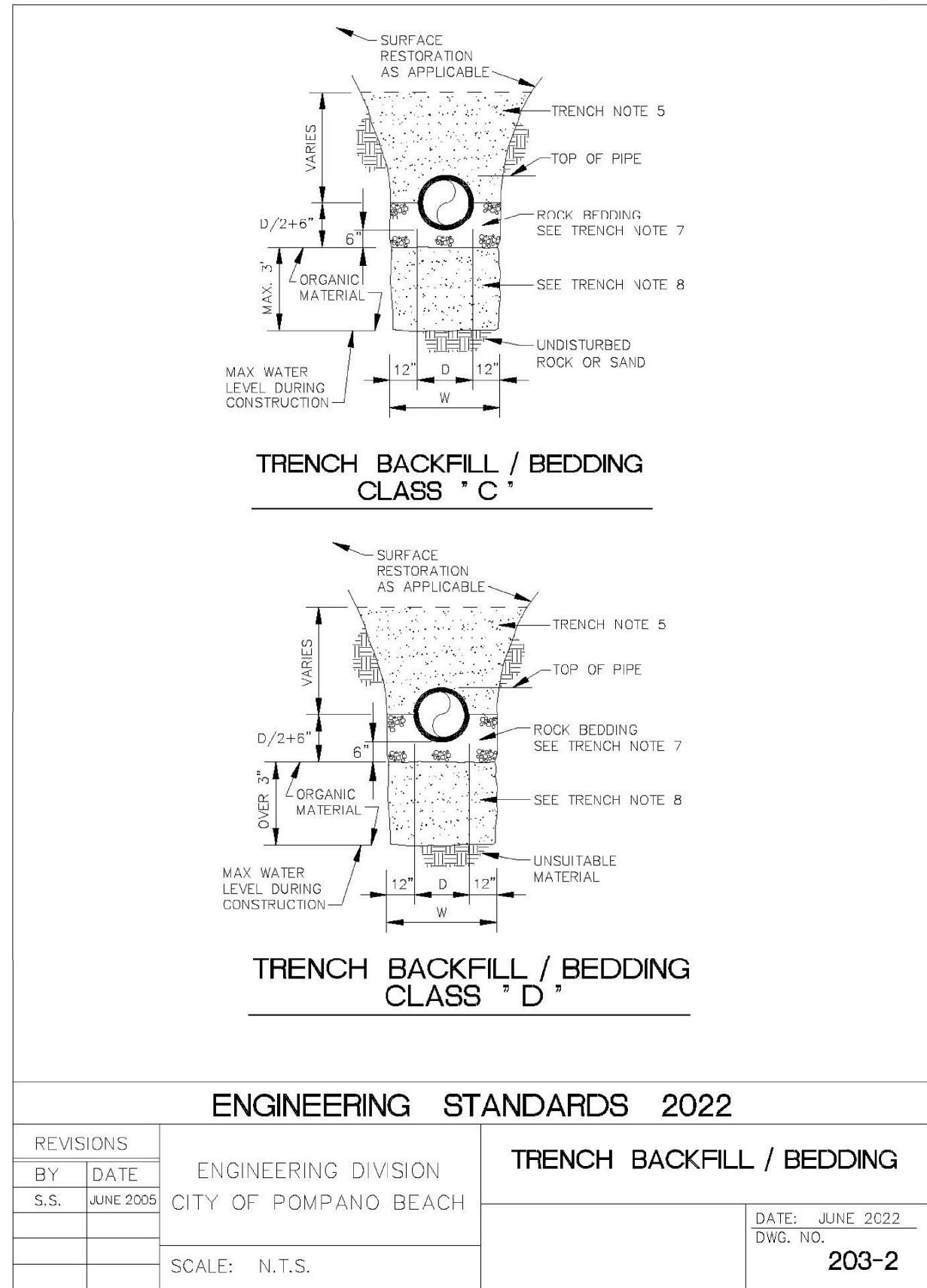
**Specification:**  
Furnish and install stainless steel shielded sewer couplings, as manufactured by Mission Rubber Company. Coupling to meet ASTM C 1173. Gasket to meet ASTM C 425 Table 2, to be rubber and be environmentally certified. Series 300 stainless steel shear band with a minimum thickness of .012", surgical grade 316 stainless steel clamps with nut & bolt take up, shear ring and clamps to meet all requirements of ASTM A 240. All stainless steel parts and clamping mechanisms to be manufactured in the U.S.A. Transitional sizes to utilize a one piece gasket.

**ADJUSTABLE REPAIR COUPLING PVC/CLAY NOTES**

ENGINEERING STANDARDS 2022			
REVISIONS	ENGINEERING DIVISION	ADJUSTABLE REPAIR COUPLING	
BY DATE	CITY OF POMPANO BEACH		
T.W. 11-2007			
S.S. 01/27/12			
S.S. 07/10/12			
S.S. 02/05/16	SCALE: N.T.S.		DATE: MAY 2022 DWG. NO. 202-1



ENGINEERING STANDARDS 2022			
REVISIONS	ENGINEERING DIVISION	TRENCH BACKFILL / BEDDING	
BY DATE	CITY OF POMPANO BEACH		
S.S. JUNE 2008			
	SCALE: N.T.S.		DATE: JUNE 2022 DWG. NO. 203-1



ENGINEERING STANDARDS 2022			
REVISIONS	ENGINEERING DIVISION	TRENCH BACKFILL / BEDDING	
BY DATE	CITY OF POMPANO BEACH		
S.S. JUNE 2008			
	SCALE: N.T.S.		DATE: JUNE 2022 DWG. NO. 203-2

Digitally signed by Bealinda M Pell  
DN: c=US, o=Florida, dnQualifier=A01410D0000017FB6C8143E00037A12, cn=Bealinda M Pell  
Date: 2023.12.01 22:49:44 -05'00'



Know what's below.  
Call before you dig.

**DRC**  
PZ23-1200009  
01/17/2024

DESIGNED: WFI DATE: 01/2023  
DRAWN: WFI DATE: 01/2023  
CHECKED: BMP DATE: 11/2023  
PUBLISHED: 12/1/2023, 5:15:54 PM

**WINNINGHAM & FRADLEY**  
ENGINEERS • PLANNERS • SURVEYORS  
111 N.E. 44<sup>th</sup> STREET • OAKLAND PARK, FL 33334  
954.771.7440 fax: 954.771.0298 • EB, LB, 0002995 • www.winfrad.com

**PALM AIRE TENNIS CENTER**  
RWB / LINARES ARCHITECTURE

CITY OF POMPANO BEACH  
**STANDARD SANITARY DETAILS**

APPROVED:	EB-0002995 LB-0002995
DATE:	
PROJECT NUMBER	22036
SHEET	SD1 OF 2